

SGLB2448364N610

HDPE STRUCTURAL FOAM / POLYMER CONCRETE COVER Channell's SGLB Assembly

FEATURES:

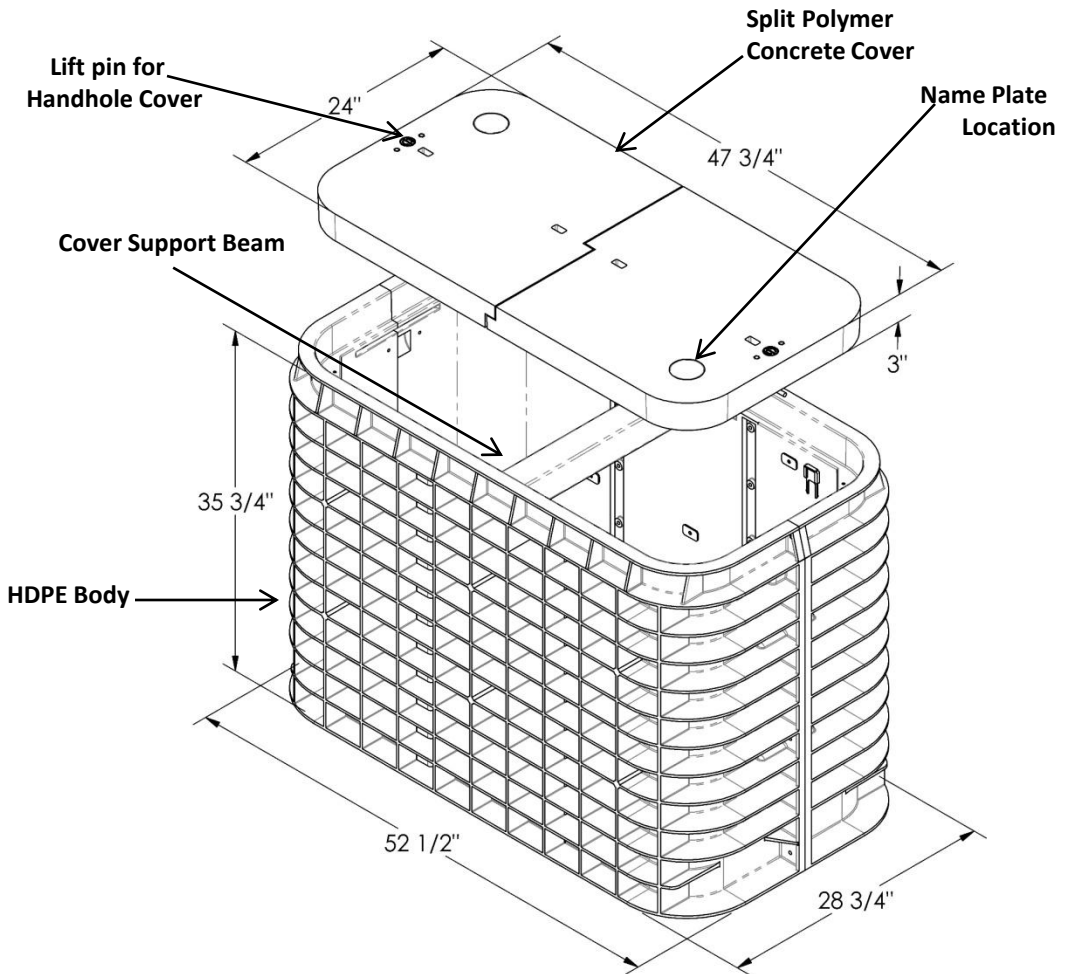
- 24 X 48 X 36 inches (Open Floor)
- HDPE Body – Split Polymer Concrete Cover - Load Rated Tier 15 (ANSI/SCTE 77 2010)
- 1 Galvanized Steel center support beam
- 2 L Bolt ¼ turn lock
- 2 Box self centering stainless steel corrosion resistant nuts per cover half
- 2 Temporary drop doors: 1 each side
- Minimum of 2 lifting slots per cover half, equipped with stainless steel pins (slots approximately ¾" x 2")

WEIGHT & SHIPPING:

- Cover Weight: 117 lbs (both halves)
- Box Weight: 114 lbs
- Assembly Weight: 231 lbs
- Loaded Pallet Weight: 240 lbs
- Per Pallet #: 1
- Pallet Dimensions: 54"L x 36"W x 39"H

LOAD RATINGS:

- ANSI/SCTE TIER 15



Inside Dimensions

Length	Width	Depth
46.75"	29"	35.75"



BULK2448364N110

HDPE STRUCTURAL FOAM / POLYMER CONCRETE COVER Channell's SGLB Assembly

FEATURES:

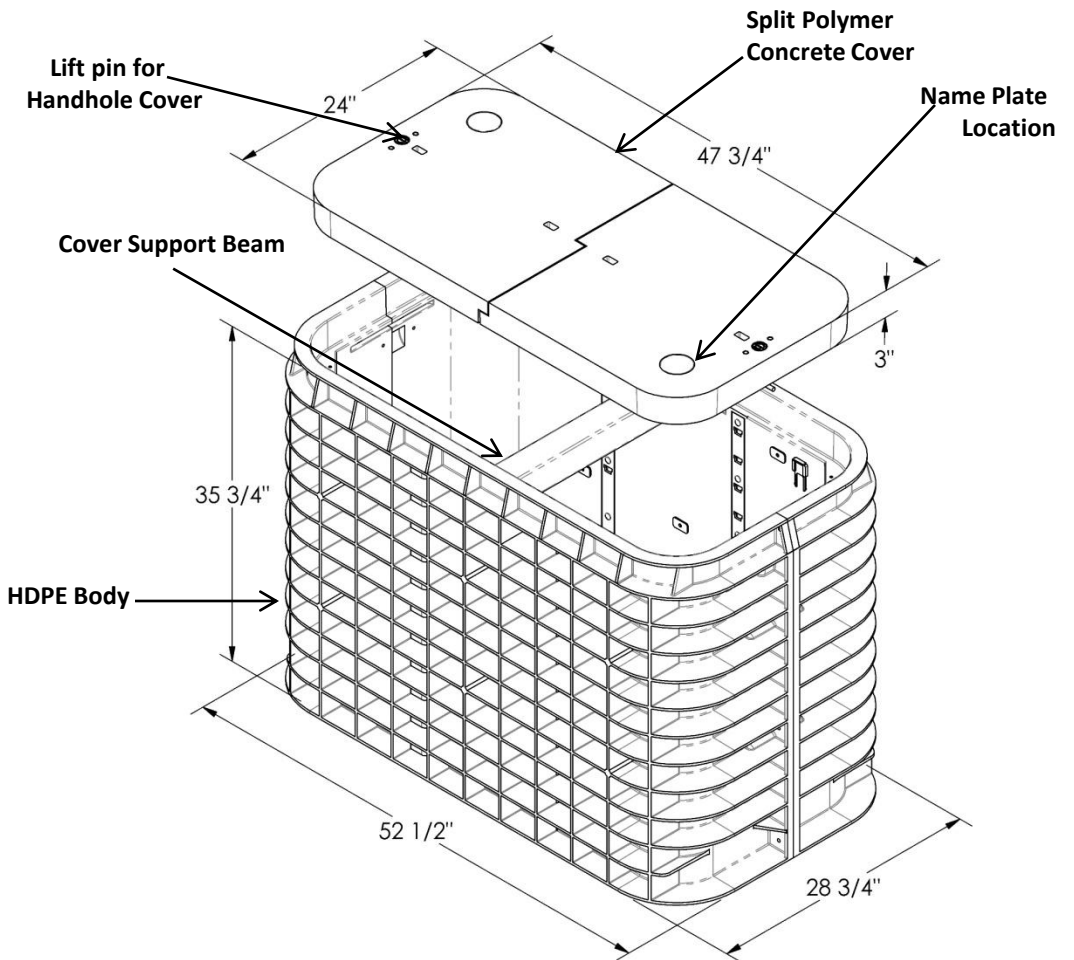
- 24 X 48 X 36 inches (Open Floor)
- HDPE Body – Split Polymer Concrete Cover - Load Rated Tier 15 (ANSI/SCTE 77 2010)
- 1 Galvanized Steel center support beam
- 1 L Bolt ¼ turn lock
- 4 Hot dipped galvanized cable rack supports, 2 each side (approx. 108 inches total of galvanized metal material, rack hardware bolts are also to be stainless steel)
- 2 Temporary drop doors: 1 each side
- Minimum of 2 lifting slots per cover half, equipped with stainless steel pins (slots approximately ¾" x 2")

WEIGHT & SHIPPING:

- Cover Weight: 117 lbs (both halves)
- Box Weight: 114 lbs
- Assembly Weight: 231 lbs
- Loaded Pallet Weight: 240 lbs
- Per Pallet #: 1
- Pallet Dimensions: 54"L x 36"W x 39"H

LOAD RATINGS:

- ANSI/SCTE TIER 15



Inside Dimensions

Length	Width	Depth
46.75"	29"	35.75"

BULK2448364N1020

HDPE STRUCTURAL FOAM / DUCTILE IRON COVER AND SUPPORT RING Channell's BULK Assembly

FEATURES:

- 24"X 48" X 36" inches (Open Floor)
- HDPE Body – Ductile Iron Cover - Load Rated EN 124 Class C250
- 1 Galvanized Steel support frame and beam
- 1 Cover locking bolts per cover half
- 2 Temporary drop doors: 1 each side
- 4 Hot dipped galvanized cable rack supports, 2 each side (approx. 136 inches total of galvanized metal material, rack hardware bolts are also to be stainless steel)
- 1 lifting slot per cover half

WEIGHT & SHIPPING:

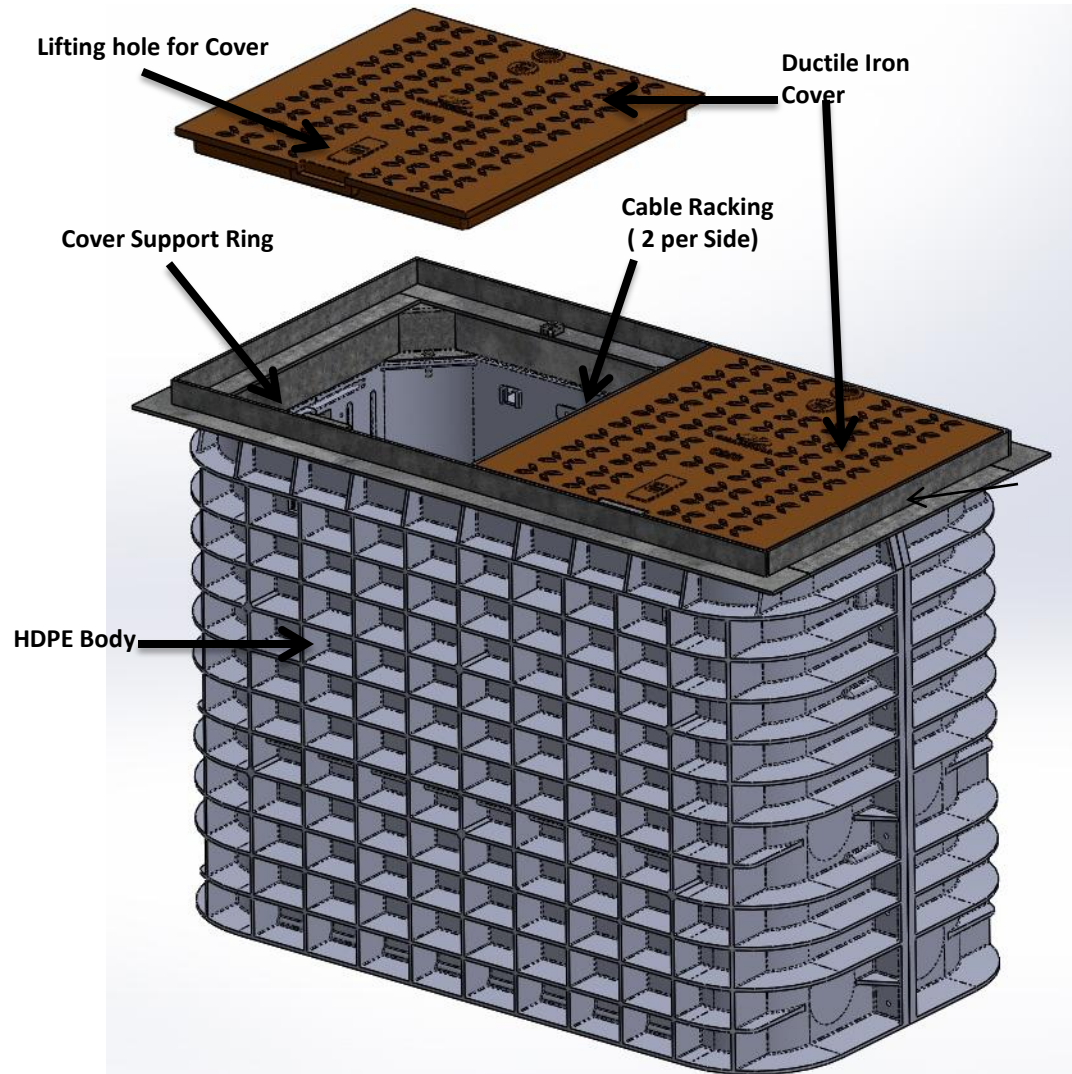
- Cover Weight:
- Box Weight:
- Assembly Weight: 312 lbs
- Loaded Pallet Weight: 342 lbs
- Per Pallet #: 1
- Pallet Dimensions: 54"L x 36"W x 39"H

LOAD RATINGS:

- EN 124 Class C250
- AASHTO H-20
- Assembly should be installed according to manufacturers recommendations



CHANNELL



Inside Dimensions

Length	Width	Depth
47"	23"	36"